



Agrimnir

COLLECTION

**NEW BIT DESIGN
FOR ICELANDIC HORSES**

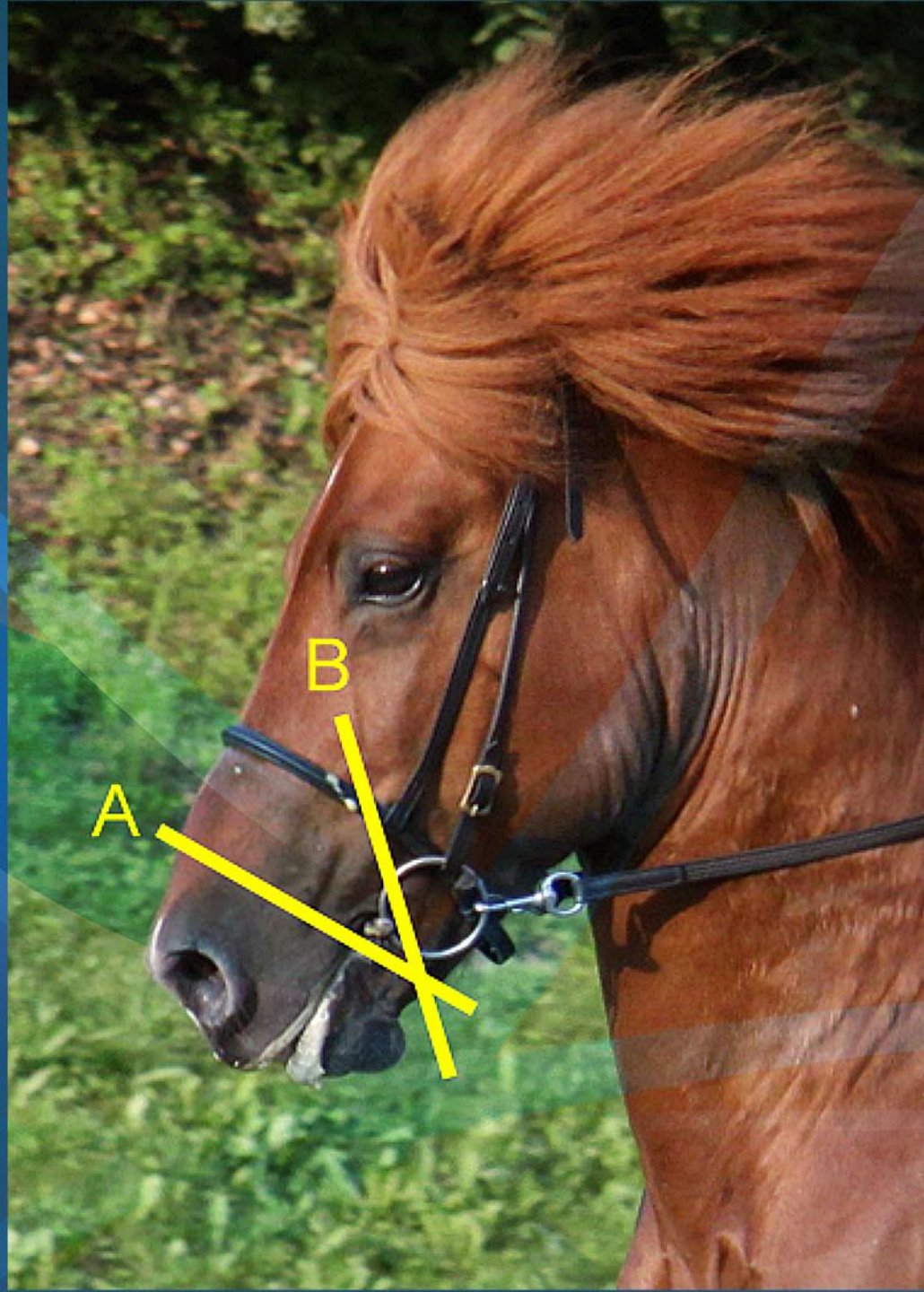
**OUR CHALLENGE WAS DESIGNING
A BIT THAT FULFILLED THESE KEY POINTS:**

- **HORSE FRIENDLY**
- **SYMBOLIC AND HISTORIC REFERENCE TO ICELAND**
- **TOP QUALITY MATERIALS**
- **FAIR PRICE**



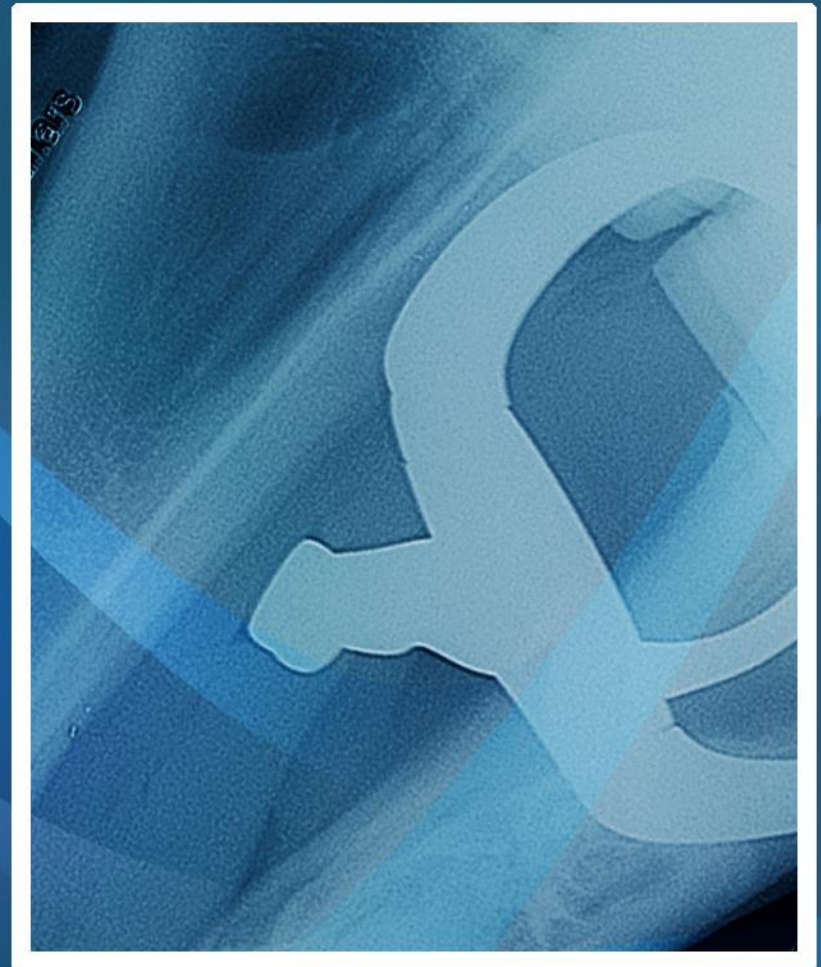
MOST BITS TODAY HAVE THE MOUTHPIECE CURVED IN THE SAME DIRECTION AS HOLE WHERE THE RING GOES THROUGH (B).

OUR KEY FACTOR IS DESIGNING THE MOUTHPIECE WITH A SHORT LINK THAT LAYS FLAT BETWEEN THE TONGUE AND PALATE (A).



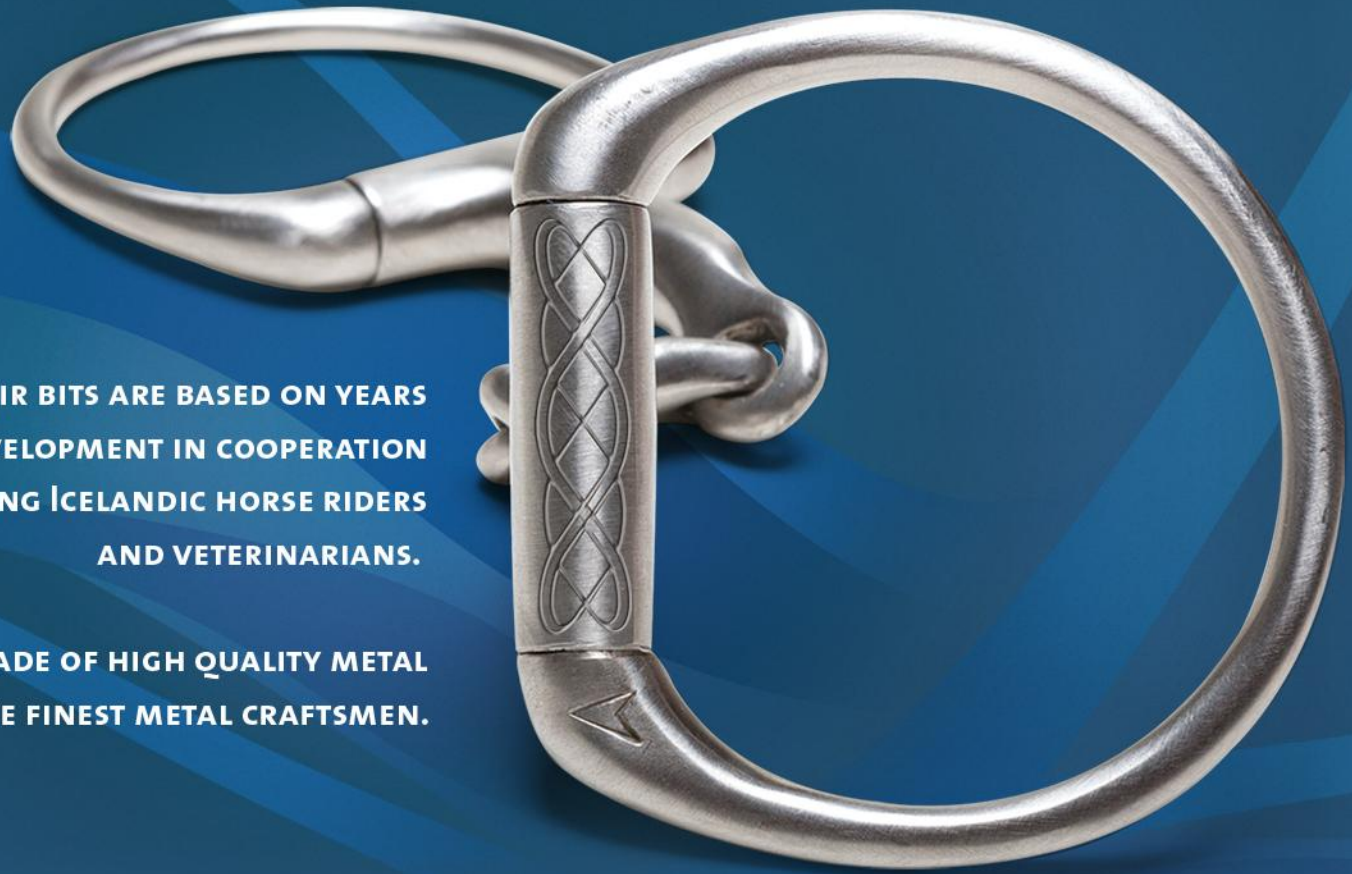
KEY FEATURES

- HERE YOU CAN SEE HOW THE LINK LAYS FLAT BETWEEN THE TONGUE AND PALATE
- THE LINK IS SHORT WITH A CURVED TOP (TO PREVENT THE JOINTS FROM IRRITATING THE PALATE)
- WE USED EGG BUTT TO MAKE SURE THAT THE RINGS DON'T PINCH THE SKIN



Hrímnir

COLLECTION



**HRÍMNIR BITS ARE BASED ON YEARS
OF PRODUCT DEVELOPMENT IN COOPERATION
WITH LEADING ICELANDIC HORSE RIDERS
AND VETERINARIANS.**

**OUR BITS ARE MADE OF HIGH QUALITY METAL
ALLOYS BY THE FINEST METAL CRAFTSMEN.**

PATENT PENDING

METALS

STAINLESS STEEL

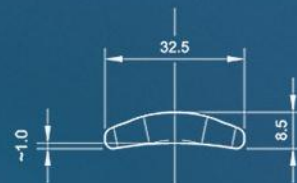
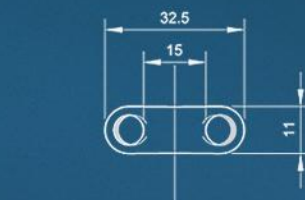
DURABLE AND LOW MAINTENANCE. DOES NOT RUST AND HAS A NEUTRAL EFFECT ON SALIVATION.

VOLCANO

A UNIQUE NICKEL-FREE COPPER ALLOY THAT ENCOURAGES INCREASED SALIVATION FOR A SOFTER AND MORE RESPONSIVE MOUTH ON THE HORSE.

LENGTHS: 10.5 cm • 11.0 cm • 11.5 cm

TECHNICAL DETAILS



TENGIŠTYKKI
1:1



FRAMHLIÐ
1:1

02 ÁSYND
1:1

TENGIŠTYKKI

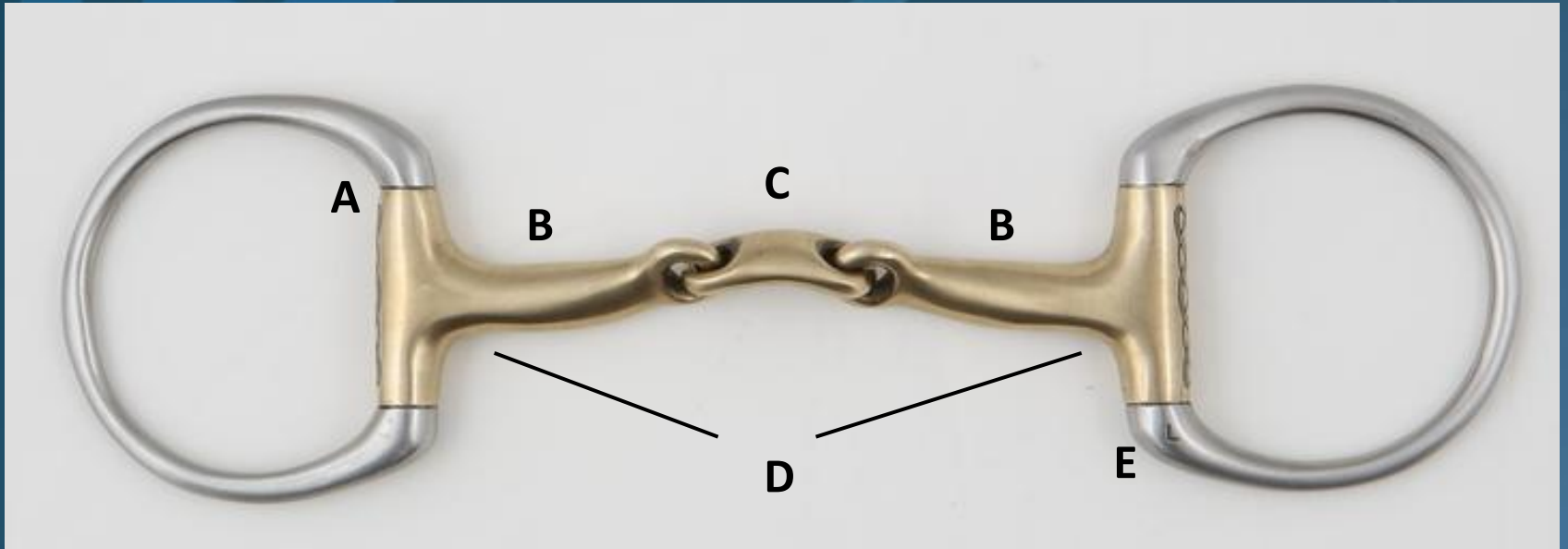
HOW TO FIT A BIT

- THE GENERAL RULE IS THAT A PROPERLY FITTED BIT MEASURES 0,5 CM LONGER THAN THE WIDTH OF THE HORSE'S MOUTH
- EGGBIT BITS SHOULD REST COMFORTABLY AGAINST THE CORNERS OF THE MOUTH
- YOU CAN ADJUST THE CHEEK PIECES OF THE BRIDLE TO MAKE SURE THAT THE BIT RESTS PROPERLY IN THE BARS OF THE MOUTH, CREATING ONE OR TWO WRINKLES AT THE CORNERS

WHAT DO THE PROFESSIONALS SAY:

- 10,5CM FITS MOST HORSES
- LENGTH SHOULD BE APPROX 1CM SHORTER THAN NORMAL BITS
- DOUBLE JOINTED BIT FITS BEST WHEN BRIDLE IS ADJUSTED SO THERE IS ONLY ONE WRINKLE AT THE CORNERS





PARTS OF THE BIT:

- A. EGGBUTT**
- B. SIDEBARS / CANNONS**
- C. LINK**
- D. MOUTHPIECE**
- E. " L " STAMP = LOWER LEFT**



ART NO	DESCRIPTION	SIZE
21131	EGGBUTT DOUBLE JOINTED – STAINLESS STEEL	11,5
21132	EGGBUTT DOUBLE JOINTED – STAINLESS STEEL	11,0
21133	EGGBUTT DOUBLE JOINTED – STAINLESS STEEL	10,5

KEY FEATURES:

EGGBUTT: SOFT FOR THE CORNERS OF THE MOUTH

MOUHPIECE/LINK: TWISTED FORWARD 30° SO LINK LIES FLAT BETWEEN TONGUE AND PALATE

SHORT LINK: FITS WELL OVER THE TONGUE

LONG SIDEBARS: LESS CHANGE SIDEBAR CAN BE PULLED "OUT" WHEN RIDING

CURVED LINK: SMOOTH AGAINST THE PALATE

"L" STAMP: SHOULD BE IN LOWER LEFT SIDE



ART NO	DESCRIPTION	SIZE
21141	EGGBUTT DOUBLE JOINTED BIT - VOLCANO	11,5
21142	EGGBUTT DOUBLE JOINTED BIT - VOLCANO	11,0
21143	EGGBUTT DOUBLE JOINTED BIT - VOLCANO	10,5

KEY FEATURES:

EGGBUTT: SOFT FOR THE CORNERS OF THE MOUTH

MOUHPIECE/LINK: TWISTED FORWARD 30° SO LINK LIES FLAT BETWEEN TONGUE AND PALATE

SHORT LINK: FITS WELL OVER THE TONGUE

LONG SIDEBARS: LESS CHANGE SIDEBAR CAN BE PULLED "OUT" WHEN RIDING

CURVED LINK: SMOOTH AGAINST THE PALATE

"L" STAMP: SHOULD BE IN LOWER LEFT SIDE



ART NO	DESCRIPTION	SIZE
21111	EGGBUTT BIT – STAINLESS STEEL	11,5
21112	EGGBUTT BIT – STAINLESS STEEL	11,0
21113	EGGBUTT BIT – STAINLESS STEEL	10,5

KEY FEATURES:

EGGBUTT: SOFT FOR THE CORNERS OF THE MOUTH

MOUHPIECE: 12MM THICK SO IT TAKES LESS SPACE IN THE MOUTH

JOINT: SMALL SO IT TAKES LESS SPACE IN THE MOUTH

“L” STAMP: SHOULD BE IN LOWER LEFT SIDE



ART NO	DESCRIPTION	SIZE
21121	EGGBUTT BIT – VOLCANO	11,5
21122	EGGBUTT BIT – VOLCANO	11,0
21123	EGGBUTT BIT – VOLCANO	10,5

KEY FEATURES:

EGGBUTT: SOFT FOR THE CORNERS OF THE MOUTH

MOUHPIECE: 12MM THICK SO IT TAKES LESS SPACE IN THE MOUTH

JOINT: SMALL SO IT TAKES LESS SPACE IN THE MOUTH

“L” STAMP: SHOULD BE IN LOWER LEFT SIDE